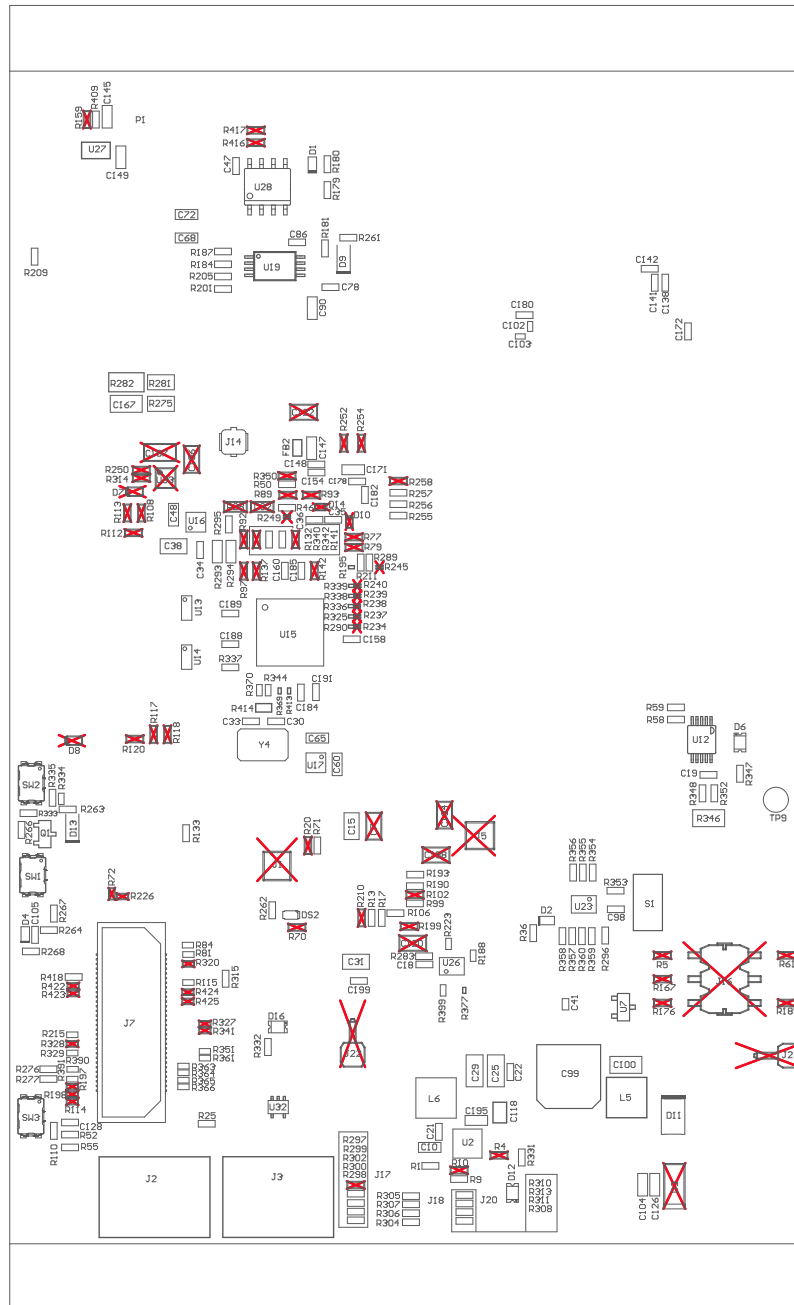
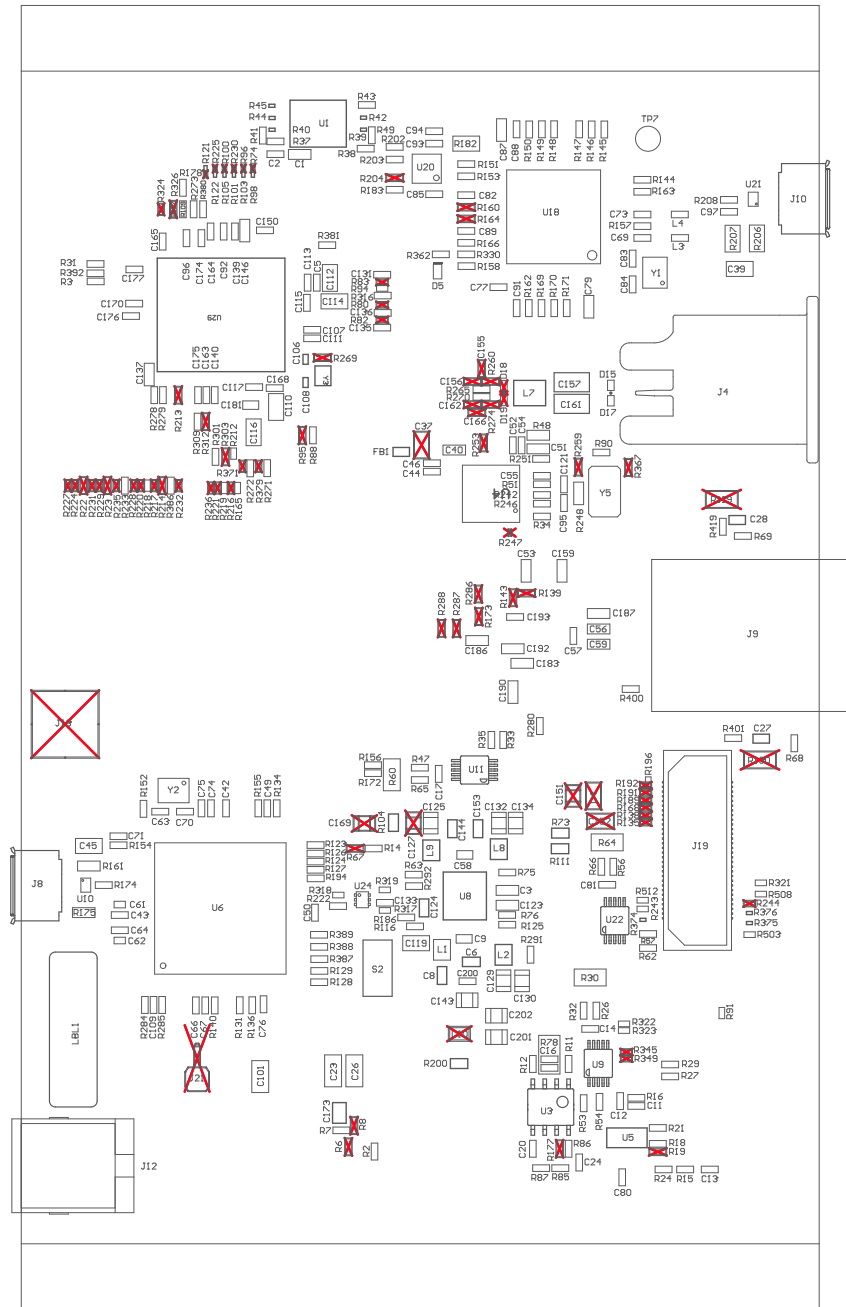


- 223 ■ These assemblies must be clean and free from flux and all contaminants. Use of no clean flux is not acceptable.
- 224 ■ These assemblies must comply with workmanship standards IPC-A-610 Class 2, unless otherwise specified.
- 221 ■ Install label in silkscreened box after final wash. Text shall be 8 pt font. Text shall be per the Label Table in the PDF schematic.
- 222 ■ These assemblies are ESD sensitive, ESD precautions shall be observed.



COMPONENTS MARKED 'DNP' SHOULD NOT BE POPULATED.
ASSEMBLY VARIANT: 001

PCB VIEWED FROM TOP SIDE	BOARD #: PROC196	REV: A	SUN REV: Not in version control
	TID #: N/A		
PLOT NAME = Top Assembly Drawing	GENERATED : 8/30/2024 4:07:06 PM	TEXAS INSTRUMENTS	



COMPONENTS MARKED 'DNP' SHOULD NOT BE POPULATED.
ASSEMBLY VARIANT: 001

PCB VIEWED FROM BOTTOM SIDE	BOARD #: PROC196	REV: A	SUN REV: Not in version control
	TID #: N/A		
PLOT NAME = Bottom Assembly Drawing	GENERATED : 8/30/2024 4:07:06 PM	TEXAS INSTRUMENTS	